

Holcombe Concrete Seat BX211007



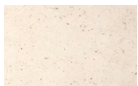
Standard Unit Dimensions:

Diameter (Top): 900mm
 Diameter (Bottom): 800mm
 Height: 500mm
 Weight: 744kg

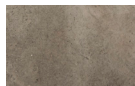
Concrete Colours/Finishes:



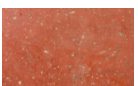
LG01
Acid Etched



WH03
Acid Etched



BL03
Acid Etched



RD10
Acid Etched



YL01
Acid Etched

The colours shown are a guide only.
 Please check a colour chart to see the actual colour.

Product Information

This beautiful Holcombe Round Concrete Seat brings with it a subtle, minimalist feel that belies its inherent strength and durability. Its shape immediately softens the harshest landscape, and it is available in a range of natural tones.

Features

- Surface mounted seat
- Low maintenance concrete bench
- Supplied in a dressed finish as standard

Materials Used

- Precast Concrete

Options

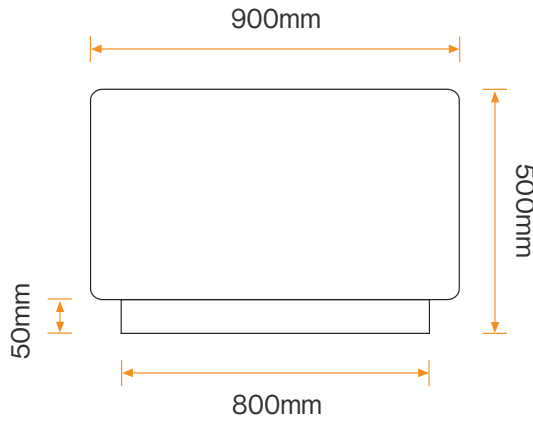
- Available in different finishes:
 - Acid Etched
 - Acid Etched with Smooth Buffed Top
 - Acid Etched with Deluxe Polished Top

Broxap Limited, Rowhurst Industrial Estate, Chesterton, Newcastle-under-Lyme, Staffordshire, ST5 6BD T: 01782 564411 E: info@broxap.com W: www.broxap.com



Holcombe Concrete Seat BX211007

Diagram



Installation

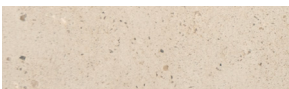
Surface mounted



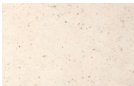
Standard Unit Dimensions:

Diameter (Top): 900mm
Diameter (Bottom): 800mm
Height: 500mm
Weight: 744kg

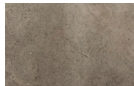
Concrete Colours/Finishes:



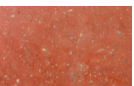
LG01
Acid Etched



WH03
Acid Etched



BL03
Acid Etched



RD10
Acid Etched



YL01
Acid Etched

The colours shown are a guide only.
Please check a colour chart to see the actual colour.

Broxap Limited, Rowhurst Industrial Estate, Chesterton, Newcastle-under-Lyme, Staffordshire, ST5 6BD T: 01782 564411 E: info@broxap.com W: www.broxap.com

