

Tintwhistle Concrete Seat BX211008



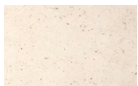
Standard Unit Dimensions:

Diameter (Top): 600mm
 Diameter (Base): 500mm
 Height: 500mm
 Weight: 336kg

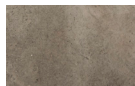
Concrete Colours/Finishes:



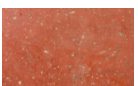
LG01
Acid Etched



WH03
Acid Etched



BL03
Acid Etched



RD10
Acid Etched



YL01
Acid Etched

The colours shown are a guide only.
 Please check a colour chart to see the actual colour.

Product Information

Smooth and inviting, the Tintwhistle Concrete Seat is a familiar, comfortable structure with a round shape that adds flow to its surroundings. Available in Grey BG01 with a dressed finish as standard, other colours are available.

Features

- Surface mounted seat
- Low maintenance concrete bench
- Supplied in Budget Grey BG01 and dressed finish as standard

Materials Used

- Precast Concrete

Options

- Available in different finishes:
 - Acid Etched
 - Acid Etched with Smooth Buffed Top
 - Acid Etched with Deluxe Polished Top

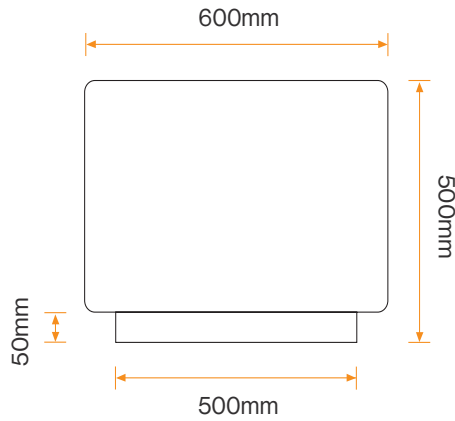
Broxap Limited, Rowhurst Industrial Estate, Chesterton, Newcastle-under-Lyme, Staffordshire, ST5 6BD T: 01782 564411 E: info@broxap.com W: www.broxap.com



Tintwhistle Concrete Seat BX211008



Diagram



Installation

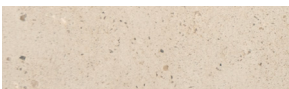
Surface mounted



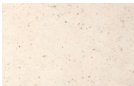
Standard Unit Dimensions:

Diameter (Top): 600mm
Diameter (Base): 500mm
Height: 500mm
Weight: 336kg

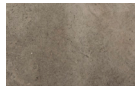
Concrete Colours/Finishes:



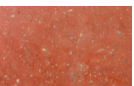
LG01
Acid Etched



WH03
Acid Etched



BL03
Acid Etched



RD10
Acid Etched



YL01
Acid Etched

The colours shown are a guide only.
Please check a colour chart to see the actual colour.

Broxap Limited, Rowhurst Industrial Estate, Chesterton, Newcastle-under-Lyme, Staffordshire, ST5 6BD T: 01782 564411 E: info@broxap.com W: www.broxap.com

